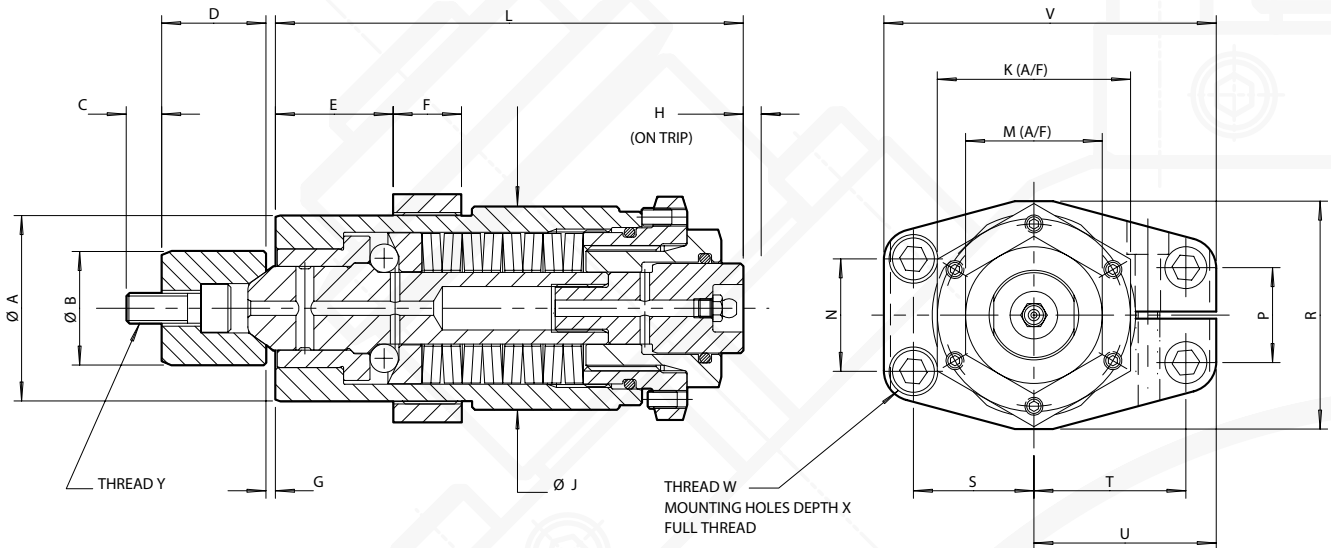


AUTOGARD SERIES 820

MODULE SUB-ASSEMBLIES

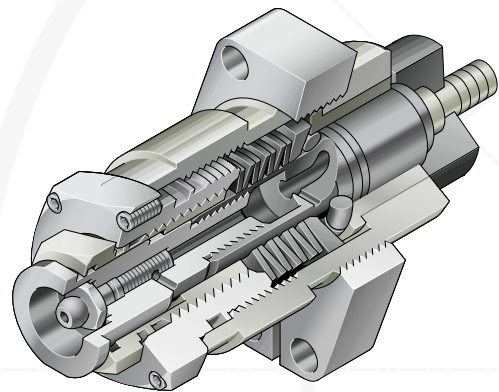
Autogard Series 820 Module sub-assemblies may be designed into customer specific applications. Please consult Autogard for assistance in selecting and designing the module into your specific application



Technical Data

Size	Tangential Force (N)		Axial Force (N)		Mass (kg)
	Max.	Min.	Max.	Min.	
1L	4300	1075	2150	538	0.49
1H	8600	2150	4300	1075	0.55
2L	10200	2550	5100	1275	1.05
2H	20400	5100	10200	2550	1.19
3L	18400	4600	9200	2300	3.78
3H	36800	9200	18400	4600	4.39
4L	39500	9875	19750	4938	9.14
4H	79000	19750	39500	9875	10.64

1) Mass includes mounting screws and seat bush.



Dimensional Data - mm

Size	A (g7-H7)	B (h7-H7)	C	D	E	F	G	H	J	K	L	M	N	P	R	S	T	U	V	W	X	Y
1L	30	18	8.3	13.2	19.6	11.4	1.7	3.7	33.3	30	83.4	24	18.80	14.73	39.6	19.81	26.16	31.0	55.6	M5	15	M4
1H	30	18	8.3	13.2	19.6	11.4	1.7	3.7	33.3	30	93.4	24	18.80	14.73	39.6	19.81	26.16	31.0	55.6	M5	15	M4
2L	40	25	11.0	17.1	25.6	15.2	2.3	5.0	44.5	41	95.9	30	24.13	16.51	50.8	25.91	32.26	38.1	69.9	M6	16	M6
2H	40	25	11.0	17.1	25.6	15.2	2.3	5.0	44.5	41	109.9	30	24.13	16.51	50.8	25.91	32.26	38.1	69.9	M6	16	M6
3L	62	38	15.9	26.9	39.4	22.9	3.1	6.0	68.0	65	132.6	46	37.59	31.75	76.2	40.28	50.80	61.0	111.1	M10	25	M10
3H	62	38	15.9	26.9	39.4	22.9	3.1	6.0	68.0	65	156.6	46	37.59	31.75	76.2	40.28	50.80	61.0	111.1	M10	25	M10
4L	85	48	19.9	33.0	54.0	25.4	3.8	8.0	92.0	Ø 92	184.0	65	57.15	43.18	108.0	49.53	68.58	80.0	141.0	M12	32	M12
4H	85	48	19.9	33.0	54.0	25.4	3.8	8.0	92.0	Ø 92	216.0	65	57.15	43.18	108.0	49.53	68.58	80.0	141.0	M12	32	M12