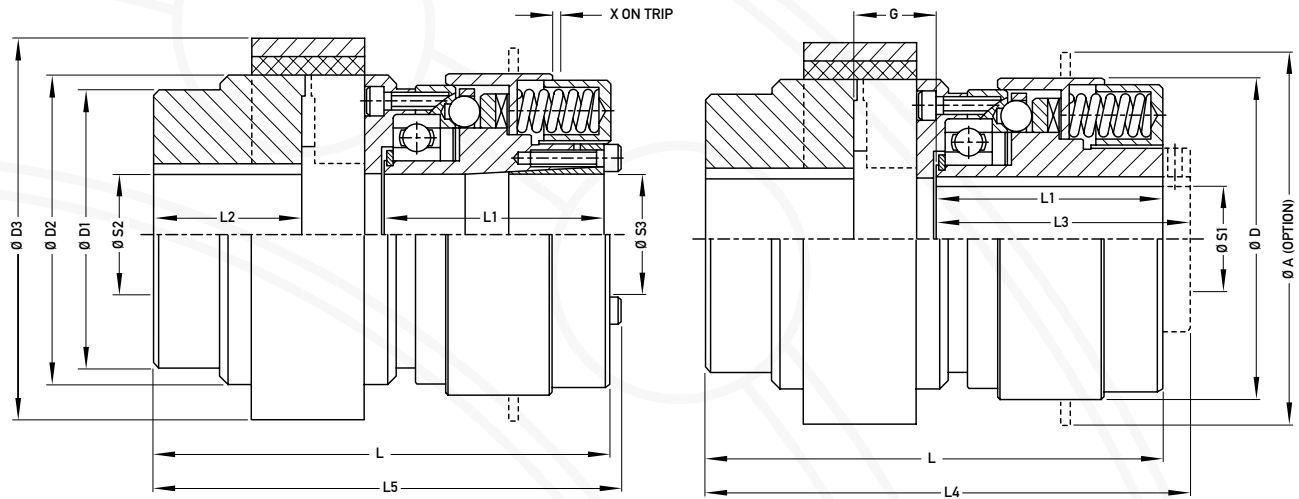


# AUTOGARD SERIES 320

## SAMIFLEX ELASTIC COUPLING



**Type 7**

**Type 8**

### Technical Data - Type 7 and Type 8

Size		01	0	1	2	3	4
Torque - Nm	Minimum	5	10	20	40	80	150
	Maximum	50	100	200	400	700	1500
Weight - Kg		1.91	3.99	7.13	8.64	15.55	24.51
Mass Moment of Inertia	Hub Side	0.0012	0.0048	0.0172	0.0196	0.0678	0.1179
	Flange Side	0.0010	0.0044	0.0164	0.0172	0.0624	0.1031
Maximum Axial Misalignment (mm)		+0.5	+0.5	+0.7	+0.7	+0.8	+1.0
Maximum Radial Misalignment (mm)		0.10	0.10	0.15	0.15	0.20	0.20
Maximum Angular Misalignment (degrees)		2	2	2	2	1.3	1.3

### Dimensional Data (mm) - Type 7 and Type 8

Size		01	0	1	2	3	4
Bore (S3) - Clamped Collar	Minimum	10	15	22	32	35	42
	Maximum	20	28	35	45	55	65
Bore (S2) - Coupling Hub	Minimum	15	18	20	20	25	26
	Maximum	38	42	55	55	70	75
Bore (S1) - Keyed Hub	Maximum	20	23	32	40	50	58
A		80	100	116	140	160	190
D		68	84	100	120	132	166
D1		65	80	85	85	110	125
D2		65	86	116	116	150	170
D3		83	111	144	144	182	202
G		15	21	29	31	36	34
L		97	127	156	171	194	214
L1		47	61	72	85	95	110
L2		35	46	56	56	63	70
L3		52	68	80	95	105	122
L4		102	134	164	181	204	226
L5		100	133	162	176	200	222
X		1.2	1.6	1.7	2.2	2.4	2.8

1) Clamp Bushes and Ringfeder™ Collars may be supplied upon request - Consult your Autogard Sales Engineer.  
 2) Weights and Inertia values are for unbored units.